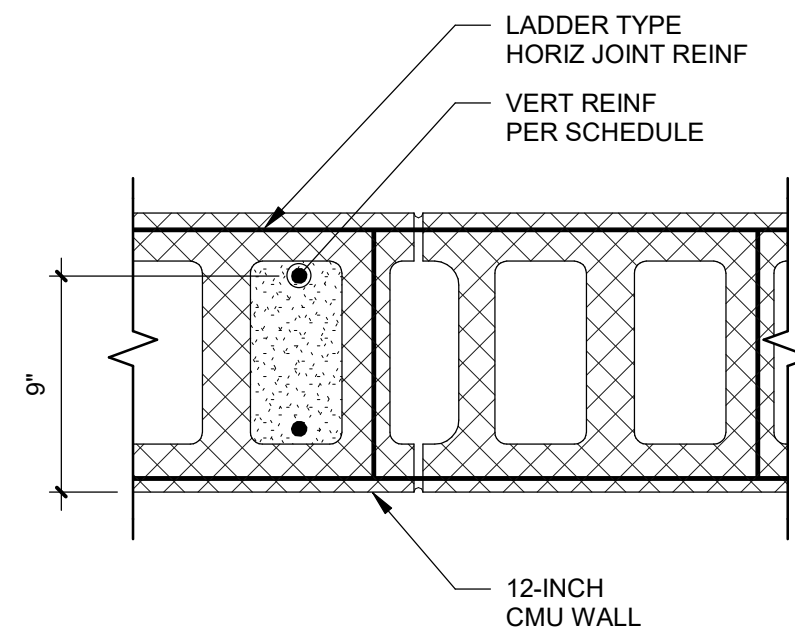
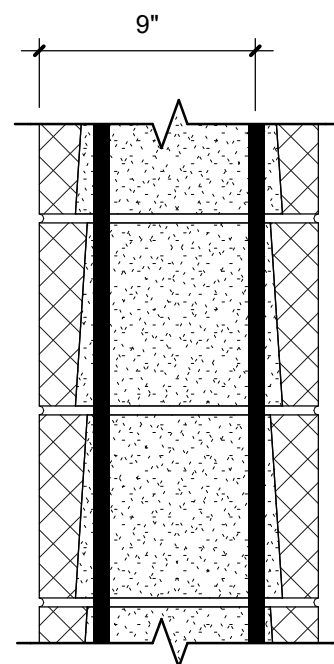
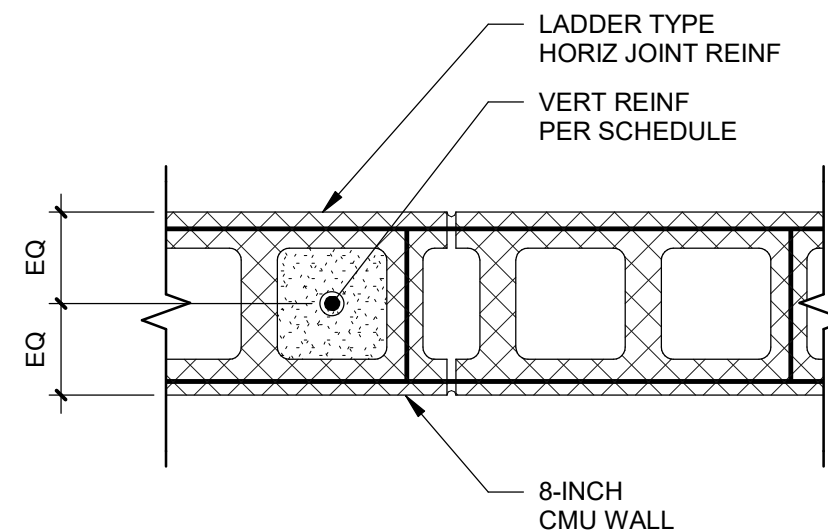
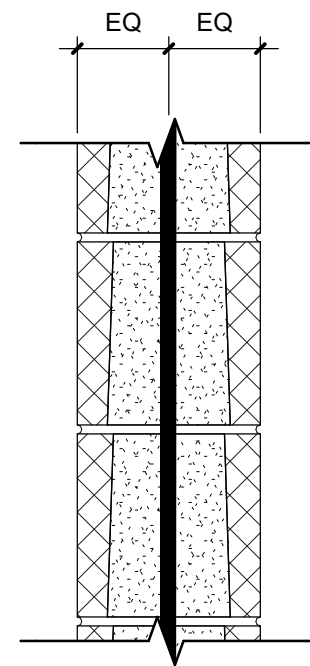


**DESIGNER NOTES:**

**DESIGN REQUIREMENTS**

1. FOR 8-INCH CMU WALLS IN SEISMIC DESIGN CATEGORIES A, B, AND C, IT IS COMMON TO USE PARTIALLY GROUTED CONSTRUCTION WITH CENTERED REINFORCEMENT.
2. FOR 12-INCH CMU WALLS IN SEISMIC DESIGN CATEGORIES A, B, AND C, IT IS COMMON TO USE PARTIALLY GROUTED CONSTRUCTION WITH OFFSET REINFORCEMENT. THESE DETAILS SHOW AN EFFECTIVE DEPTH OF THE NOMINAL WIDTH MINUS 3", SO 9" FOR A 12-INCH CMU BASED ON ANECDOTAL EVIDENCE. A LARGER VALUE FOR THE EFFECTIVE DEPTH MAY BE POSSIBLE, AND DESIGNERS SHOULD CONSULT THE BDC FOR MORE INFORMATION.



DISCLAIMER: The Block Design Collective ("BDC") does not make any representations or warranties with respect to the accuracy or suitability of this information, and persons making use of this information do so at their own risk. BDC disclaims liability for damages of any kind, including any special, indirect, or consequential damages, which may result from use of this information. This information is not to be interpreted as indicating compliance with, or waiver of, any applicable building code, ordinance, standard or law.